

# Traveling 2009

## New Company Offers Eco-Tourism Fun for Lesbians

**M**ake room lesbian vacation companies, Sweet, the eco-friendly lesbian travel company is getting ready to launch in November 2009 offering the first all-lesbian opportunity to both volunteer and vacation while leaving no carbon footprint.

The company's mission is to merge the best of lesbian travel with social and environmental awareness. Sweet is working hard to distinguish itself from other travel companies by offering trips that are really fun and provide an opportunity for guests to experience the fulfillment of making a positive difference through "voluntourism" and eco-tourism projects.

"It's part of the Sweet mission to always give back to the communities it visits," said CEO Shannon Wentworth. "We like to leave the places we visit better than we found them. It's a party with a purpose! We make social responsibility turnkey."

Wentworth honed her skills as director of promotions and editor in chief of Care2, an online community supporting social and environmental causes, vice president of marketing for Olivia, and director of marketing at PlanetOut, Inc. before taking on the need of filling this unique lesbian travel niche.

The first large trip is a fall 2009 western Caribbean cruise departing from New Orleans (November 8-15, 2009) on board Norwegian Cruise Line's Norwegian Spirit. When fully booked, it'll be the largest lesbian cruise ever. The cruise will visit

Roatan, Honduras; Costa Maya, Mexico; Cozumel, Mexico, and Belize City, Belize.

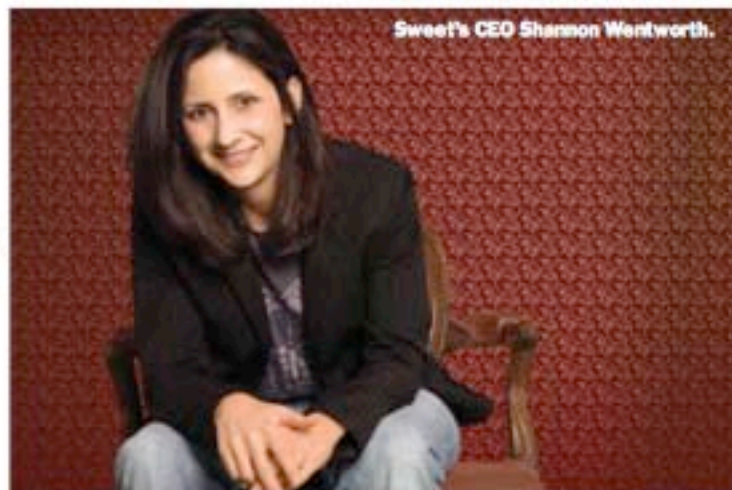
Prior to departure, Sweet will offer a three-day land package in New Orleans, giving approximately 100 guests an opportunity to plant trees in the city's devastated

cleaning-up a beach and/or restoring a natural wildlife habitat.

"The volunteer projects are just that, voluntary. Guests can take advantage of the volunteer excursions or choose their own activities," Wentworth said.

The onboard experience is, according to Wentworth, full of high-impact fun. "We've partnered with Club Skirts, the people who brought us The Dinah, to host our entertainment."

The talent lined up for the inaugural launch includes *Caree Magazine's* runner-up for Funniest Lesbian, Suzanne Westenhoefer. Other entertainers scheduled for



Sweet's CEO Shannon Wentworth.

wetlands. It's a way for Sweet guests to give back to the community during the day and enjoy New Orleans' vibrant gay nightlife in the evening.

Throughout the weeklong cruise, Sweet is working with a local agency in each port to develop a volunteer-oriented project, such as helping to build a school or clinic,

the first cruise include comedian Erin Foley and singer-songwriters Jen Foster and Edie Carey.

For information on Sweet's other vacation trips for 2009 and more information regarding their eco-tourism, volunteerism, or philanthropic efforts, visit [www.discoverstweet.com](http://www.discoverstweet.com) or by calling 1-877-SWEET30.